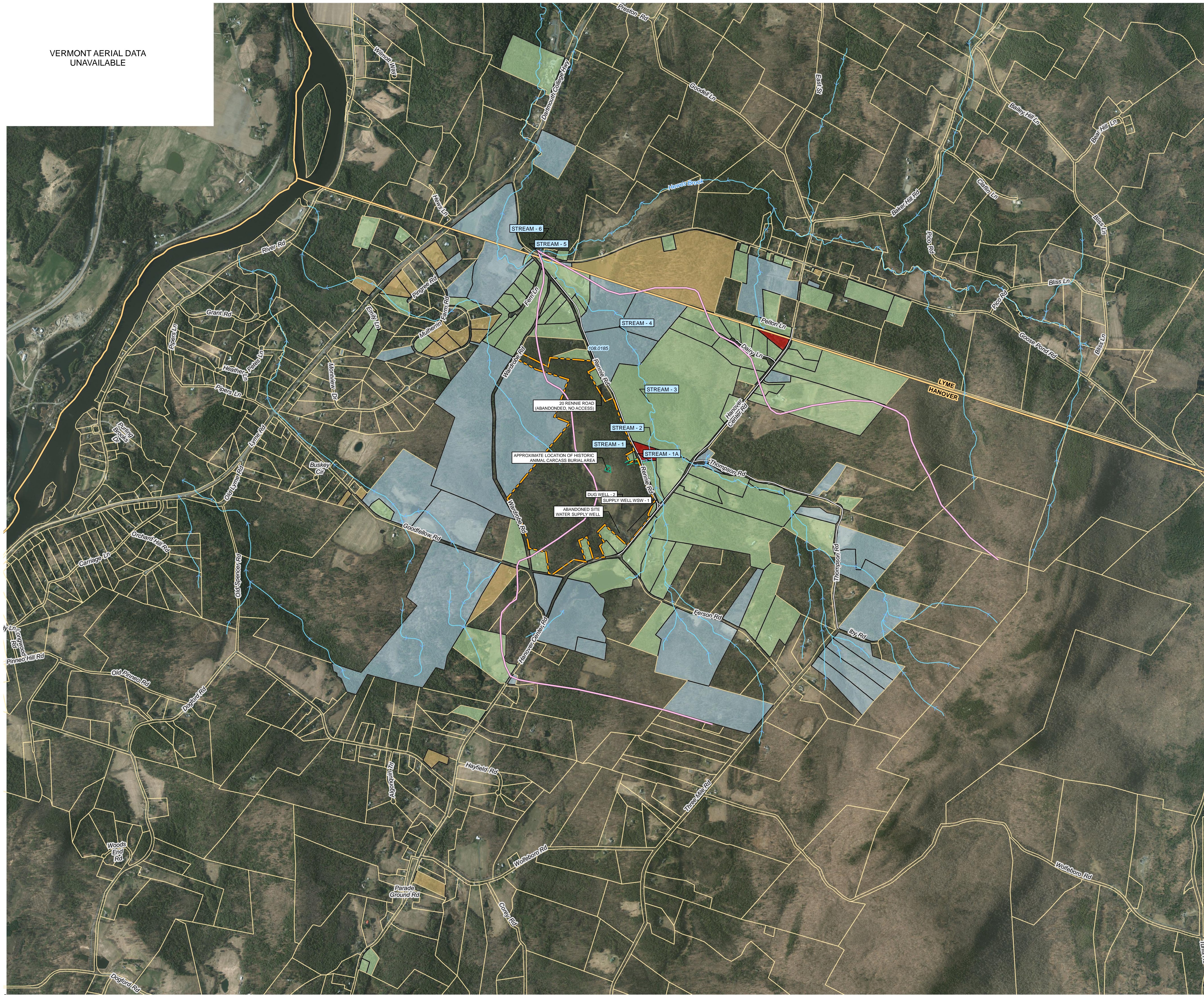
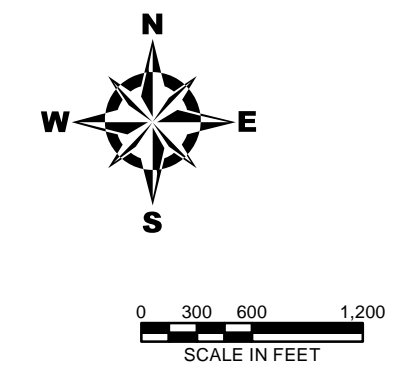


VERMONT AERIAL DATA UNAVAILABLE



LEGEND:

- INTERMITTENT/PERENNIAL STREAM; ARROW INDICATES DIRECTION OF SURFACE WATER FLOW
- LOCATION OF INTERMITTENT STREAM
- TOWN AND/OR STATE BOUNDARY
Roads: DOT
- APPROXIMATE WATERSHED BOUNDARY OF UNNAMED TRIBUTARY TO HEWES BROOK BASED ON TOPOGRAPHY AND SURFACE WATER FEATURES SHOWN ON USGS QUADRANGLE MAPS INCLUDING ENFIELD AND LYME
- RENNIE FARM PROPERTY
- TAX PARCELS**
- TAX PARCELS
- UNDEVELOPED PROPERTY
- WELL DATA ABOVE LIMIT
- WELL DATA BELOW LIMIT
- WELL SAMPLED OR SCHEDULED, DATA PENDING



GENERAL NOTES:

- 1) 2010-2011 1-FT COLOR AERIAL PHOTOS FOR THE TOWN OF HANOVER WERE OBTAINED FROM THE NH GRANIT NEW HAMPSHIRE STATEWIDE GIS CLEARINGHOUSE.
- 2) LOCATIONS OF ON SITE DUG WELL AND PORTION OF ONSITE INTERMITTENT STREAM BASED ON SURVEYS BY WSP TRANSPORATION AND INFRASTRUCTURE ON OCTOBER 14, 2014 AND JUNE 1, 2015.
- 3) SUPPLY WELLS SHOWN HEREON WERE ADAPTED FROM THE NEW HAMPSHIRE DEPARTMENT OF ENVIRONMENTAL SERVICES ONESTOP PROGRAM WEB GIS WATER WELL INVENTORY LAYER IN JANUARY 2016, OR BASED ON OBSERVATION BY GZA. WATER SUPPLY WELL LOCATIONS SHOULD BE CONSIDERED APPROXIMATE.
- 4) ACCESS TO WELL AT 20 RENNIE ROAD COULD NOT BE OBTAINED. NO SAMPLE COLLECTED.
- 5) SURFACE WATER SAMPLING LOCATIONS ARE BASED ON OBSERVATIONS OF SITE VICINITY FEATURES BY GZA AND SHOULD BE CONSIDERED APPROXIMATE.

NO.	ISSUE / DESCRIPTION	BY	DATE

UNLESS SPECIFICALLY STATED BY WRITTEN AGREEMENT, THIS DRAWING IS THE SOLE PROPERTY OF GZA GEOENVIRONMENTAL, INC. (GZA). THE INFORMATION SHOWN ON THE DRAWING IS SOLELY FOR THE USE BY GZA'S CLIENT OR THE CLIENT'S DESIGNATED REPRESENTATIVE FOR THE SPECIFIC PROJECT AND LOCATION IDENTIFIED ON THE DRAWING. THE DRAWING SHALL NOT BE TRANSFERRED, REUSED, COPIED, OR ALTERED IN ANY MANNER FOR USE AT ANY OTHER LOCATION OR FOR ANY OTHER PURPOSE WITHOUT THE PRIOR WRITTEN CONSENT OF GZA. ANY TRANSFER, REUSE, OR MODIFICATION TO THE DRAWING BY THE CLIENT OR OTHERS, WITHOUT THE PRIOR WRITTEN EXPRESS CONSENT OF GZA, WILL BE AT THE USER'S SOLE RISK AND WITHOUT ANY RISK OR LIABILITY TO GZA.

**DARTMOUTH COLLEGE, RENNIE FARM SITE
HANOVER, NEW HAMPSHIRE
NHDES SITE NO. 20111109, PROJECT NO. 277737**

DRAFT WELL SAMPLING PLANS

PREPARED BY: GZA GeoEnvironmental, Inc. Engineers and Scientists www.gza.com		PREPARED FOR: DARTMOUTH COLLEGE	
PROJ. MGR.: JMW	REVIEWED BY: SRL	CHECKED BY: RAB	FIG: FIG
DESIGNED BY: JMW	DRAWN BY: LEW	SCALE: 1" = 1,042 FEET	
DATE: 11-11-2016	PROJECT NO.: 04.0190030.02	REVISION NO.:	1