


Developed by	Reviewed by	Revised by
RA	RA	
Description: Condenser Water Pump		Equipment #: CWP-4
Building: North Chill Water Plant	Area: North Chill Water Plant	Rev: 0
Date: N/A	Origin Date: 12/18/2017	

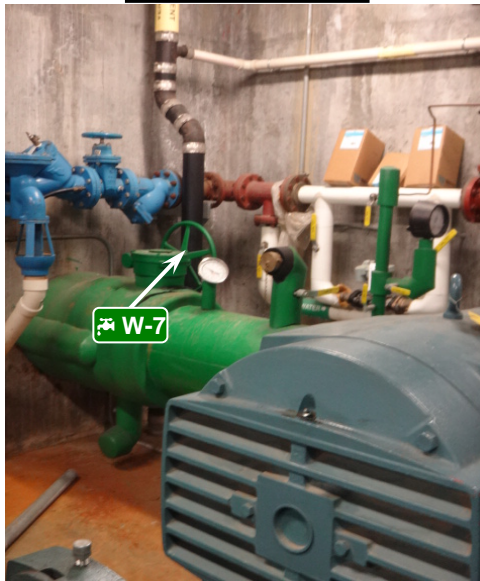
<h3>3</h3>  <h3>Isolation Points to be Locked and Tagged</h3>	DANGER
	Variable-frequency-drive capacitors often remain energized after shut-down. Discharge and wait 10 minutes prior to servicing.

## Safety Is Your Responsibility!

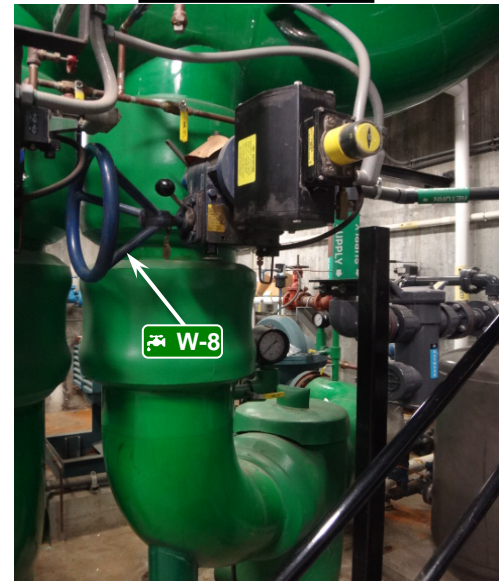
**South Side View**






**North Side View**



**West Side View**



### ALWAYS PERFORM A MACHINE STOP BEFORE LOCKING OUT DISCONNECTS

ID	Source	Device	Location	Method	Check
	<b>Electrical 480V</b>	Padlock	Isolation point located on panel MCC-2.	Move electrical disconnect "CWP-4" to off. Lock out.	Verify machine is deenergized.
	<b>Condenser Water Suction - 40 PSI</b>	Cable device	Isolation point on East side of unit.	Turn valve to closed position. Lock out.	Visually verify zero pressure status.
	<b>Condenser Water Discharge - 40 PSI</b>	Cable device	Isolation point on West side of unit.	Turn valve to closed position. Lock out.	Visually verify zero pressure status.



**OPENING A GUARD DOES NOT CONSTITUTE A LOCKOUT**  
ALWAYS VERIFY DE-ENERGIZATION OF EXPOSED ELECTRICAL PARTS AND RESIDUAL CAPACITANCE

Any machine modifications must be shown in procedure.

Contact EHS to update procedure: 603-646-1762

