


LOCKOUT/TAGOUT PROCEDURE OSHA CFR 1910.147

Developed by	Reviewed by	Revised by
RA	RA	
Description: Primary Chill Water Pump		Equipment #: PCH-4
Building: North Chill Water Plant	Area: North Chill Water Plant	Rev: 0
Date: N/A	Origin Date: 12/18/2017	

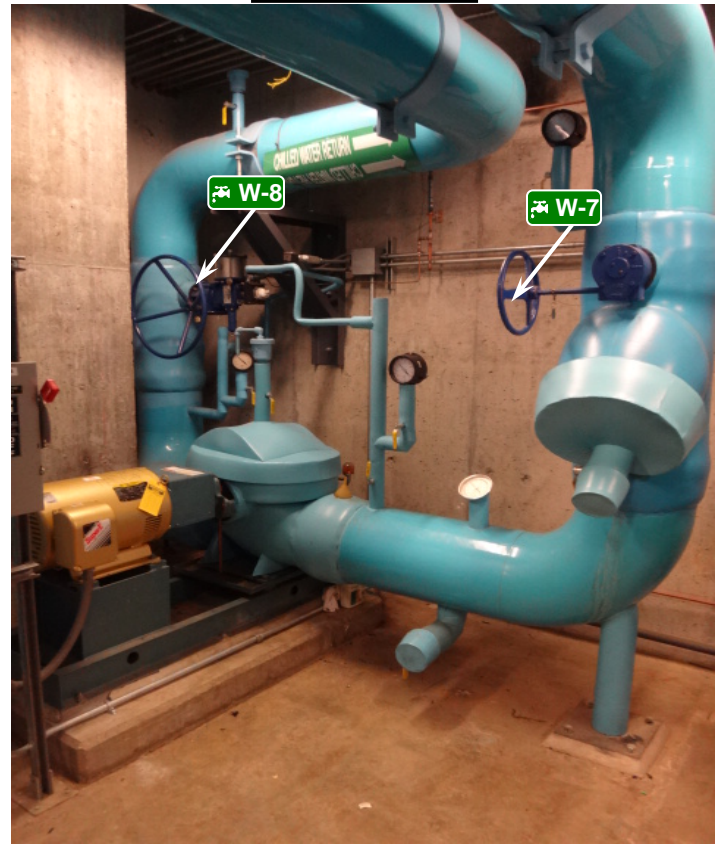
<h3>3</h3>  <h3>Isolation Points to be Locked and Tagged</h3>	<h2>DANGER</h2>
	<p>Variable-frequency-drive capacitors often remain energized after shut-down. Discharge and wait 10 minutes prior to servicing.</p>

Safety Is Your Responsibility!




East Side View



East Side View



ALWAYS PERFORM A MACHINE STOP BEFORE LOCKING OUT DISCONNECTS

ID	Source	Device	Location	Method	Check
	Electrical 480V	Padlock	Isolation point located on panel MCC-1.	Move electrical disconnect "PCHP-4" to off. Lock out.	Verify machine is deenergized.
	Chilled Water Suction - 100 PSI	Cable device	Isolation point on North side of unit.	Turn valve to closed position. Lock out.	Visually verify zero pressure status.
	Chilled Water Discharge - 100 PSI	Cable device	Isolation point on South side of unit.	Turn valve to closed position. Lock out.	Visually verify zero pressure status.



OPENING A GUARD DOES NOT CONSTITUTE A LOCKOUT
ALWAYS VERIFY DE-ENERGIZATION OF EXPOSED ELECTRICAL PARTS AND RESIDUAL CAPACITANCE

Any machine modifications must be shown in procedure.
Contact EHS to update procedure: 603-646-1762

