

Developed by	Reviewed by	Revised by
RA	RA	

Description: Jacket Cooling Pump			Equipment #: N/A	
Building: Thompson Arena	Area: Ammonia Compressor Room	Rev: 0	Date: N/A	Origin Date: 12/18/2017

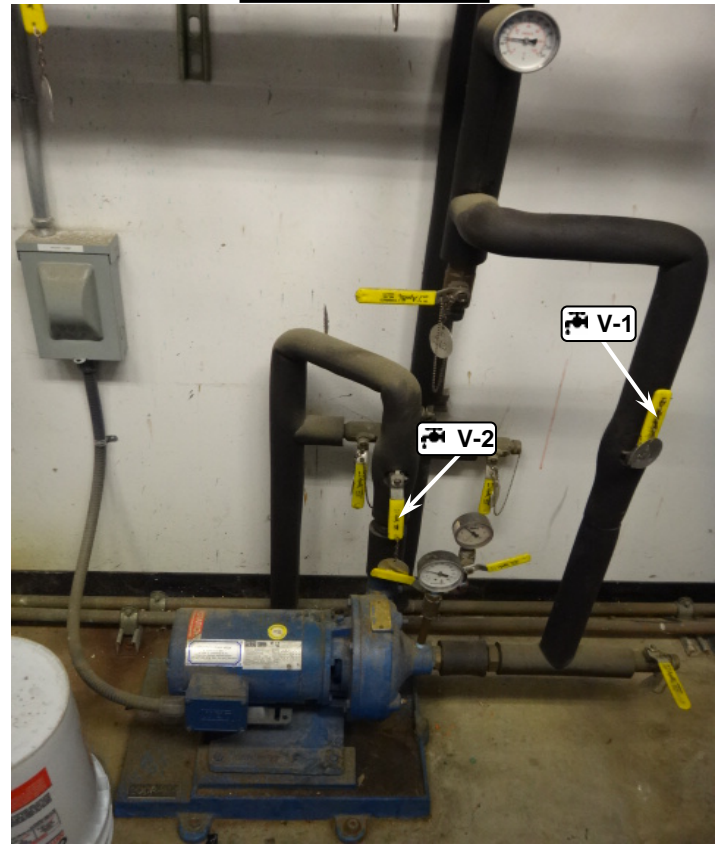
3 Isolation Points to be Locked and Tagged

Safety Is Your Responsibility!

West Side View



South Side View



ALWAYS PERFORM A MACHINE STOP BEFORE LOCKING OUT DISCONNECTS

ID	Source	Device	Location	Method	Check
E-1	Electrical 240V	Padlock	Isolation point on North side of unit.	Move electrical disconnect to off. Lock out.	Verify machine is deenergized.
V-1	Glycol Suction - 100 PSI	Ball valve device	Isolation point located above unit.	Turn valve to closed position. Lock out.	Visually verify zero pressure status.
V-2	Glycol Discharge - 100 PSI	Ball valve device	Isolation point located above unit.	Turn valve to closed position. Lock out.	Visually verify zero pressure status.



OPENING A GUARD DOES NOT CONSTITUTE A LOCKOUT
ALWAYS VERIFY DE-ENERGIZATION OF EXPOSED ELECTRICAL PARTS AND RESIDUAL CAPACITANCE

Any machine modifications must be shown in procedure.
Contact EHS to update procedure: 603-646-1762

