

Developed by	Reviewed by	Revised by
RA	RA	
Description: Condenser Water Pump Ammonia System		Equipment #: CWP-1
Building: Thompson Arena	Area: Mechanical Room	Revn: 0
Date: N/A	Origin Date: 12/18/2017	

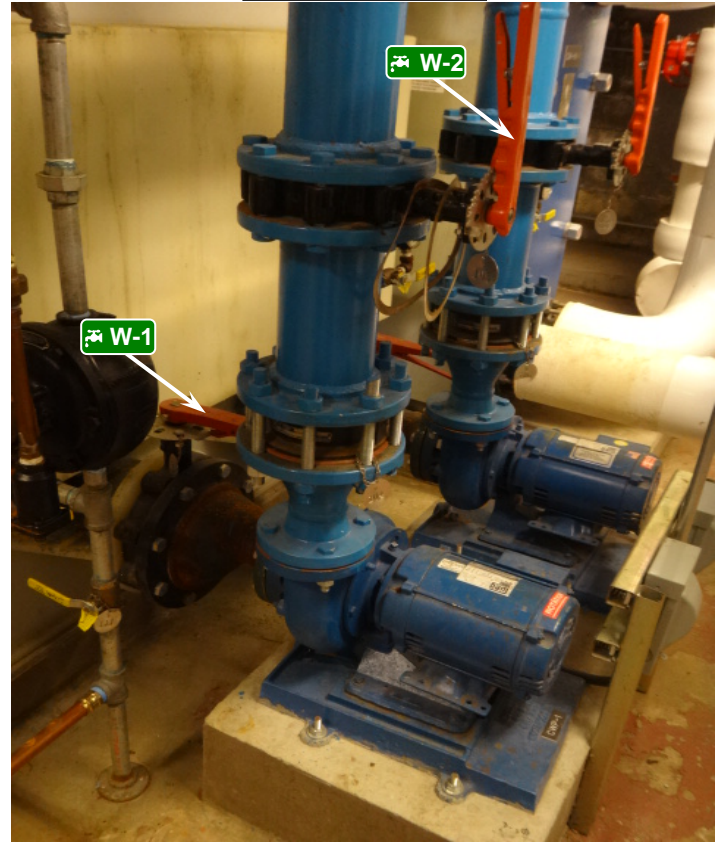
3  **Isolation Points to be Locked and Tagged**

Safety Is Your Responsibility!




West Side View



North Side View



ALWAYS PERFORM A MACHINE STOP BEFORE LOCKING OUT DISCONNECTS

ID	Source	Device	Location	Method	Check
	Electrical 480V	Padlock	Isolation point on West side of unit.	Move electrical disconnect to off. Lock out.	Verify machine is deenergized.
	Condenser Water Suction - 40 PSI	Padlock	Isolation point on East side of unit.	Turn valve to closed position. Lock out.	Visually verify zero pressure status.
	Condenser Water Discharge - 40 PSI	Padlock	Isolation point located above unit.	Turn valve to closed position. Lock out.	Visually verify zero pressure status.



OPENING A GUARD DOES NOT CONSTITUTE A LOCKOUT
ALWAYS VERIFY DE-ENERGIZATION OF EXPOSED ELECTRICAL PARTS AND RESIDUAL CAPACITANCE

Any machine modifications must be shown in procedure.
Contact EHS to update procedure: 603-646-1762

