

LOCKOUT/TAGOUT PROCEDURE
OSHA CFR 1910.147

Developed by	Reviewed by	Revised by
RA	RA	
Description: Condenser Water Pump Ammonia System		Equipment #: CWP-2
Building: Thompson Arena	Area: Mechanical Room	Revn: 0
Date: N/A	Origin Date: 12/18/2017	

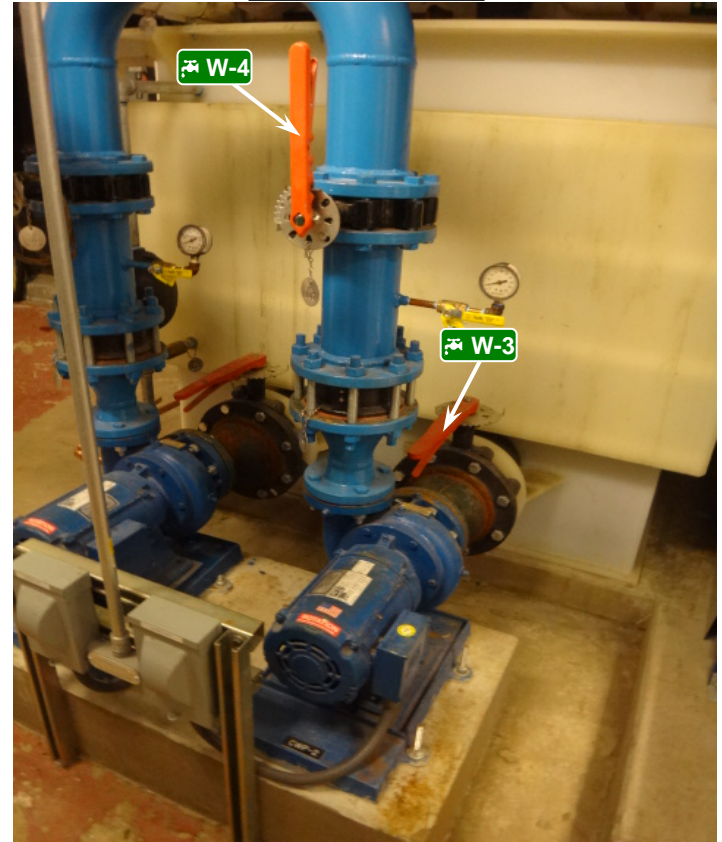
3  **Isolation Points to be Locked and Tagged**

Safety Is Your Responsibility!




West Side View



West Side View



ALWAYS PERFORM A MACHINE STOP BEFORE LOCKING OUT DISCONNECTS

ID	Source	Device	Location	Method	Check
 E-2	Electrical 480V	Padlock	Isolation point on West side of unit.	Move electrical disconnect to off. Lock out.	Verify machine is deenergized.
 W-3	Condenser Water Suction - 40 PSI	Padlock	Isolation point on East side of unit.	Turn valve to closed position. Lock out.	Visually verify zero pressure status.
 W-4	Condenser Water Discharge - 40 PSI	Padlock	Isolation point located above unit.	Turn valve to closed position. Lock out.	Visually verify zero pressure status.



OPENING A GUARD DOES NOT CONSTITUTE A LOCKOUT
 ALWAYS VERIFY DE-ENERGIZATION OF EXPOSED ELECTRICAL PARTS AND RESIDUAL CAPACITANCE

Any machine modifications must be shown in procedure.
 Contact EHS to update procedure: 603-646-1762

