


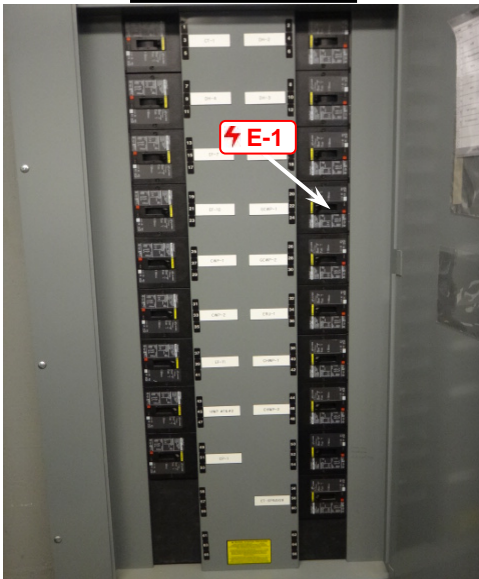
**LOCKOUT/TAGOUT PROCEDURE  
OSHA CFR 1910.147**

Developed by	Reviewed by	Revised by
RA	RA	
Description: Glycol Condenser Water Pump		Equipment #: GCWP-1
Building: Thompson Arena	Area: Mechanical Room	Rev: 0 Date: N/A Origin Date: 12/18/2017

<b>3</b> 	<b>Isolation Points to be Locked and Tagged</b>	<b>DANGER</b>
		Variable-frequency-drive capacitors often remain energized after shut-down. Discharge and wait 10 minutes prior to servicing.

**Safety Is Your Responsibility!**

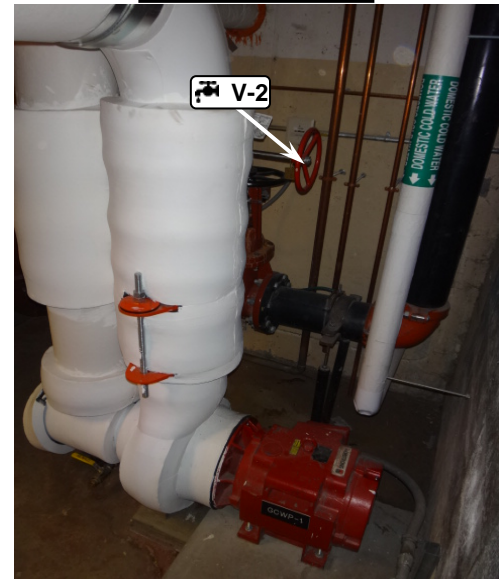
**East Side View**




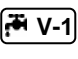
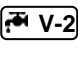
**North Side View**



**West Side View**



**ALWAYS PERFORM A MACHINE STOP BEFORE LOCKING OUT DISCONNECTS**

ID	Source	Device	Location	Method	Check
 E-1	<b>Electrical 480V</b>	Breaker lockout device	Isolation point located in panel MD-1.	Move breaker 20-22-24 to off. Lock out.	Verify machine is deenergized.
 V-1	Glycol Condenser Water Suction - 40 PSI	Cable device	Isolation point on North side of unit.	Turn valve to closed position. Lock out.	Visually verify zero pressure status.
 V-2	Glycol Condenser Water Discharge - 40 PSI	Cable device	Isolation point on North side of unit.	Turn valve to closed position. Lock out.	Visually verify zero pressure status.



**OPENING A GUARD DOES NOT CONSTITUTE A LOCKOUT**  
 ALWAYS VERIFY DE-ENERGIZATION OF EXPOSED ELECTRICAL PARTS AND RESIDUAL CAPACITANCE  
 Any machine modifications must be shown in procedure.  
 Contact EHS to update procedure: 603-646-1762

