

LOCKOUT/TAGOUT PROCEDURE
OSHA CFR 1910.147

Developed by	Reviewed by	Revised by
RA	RA	

Description: Snow Melt Pit Pump		Equipment #: SMP-1	
Building: Thompson Arena	Area: Mechanical Room	Rev'n: 0	Date: N/A
		Date: N/A	Origin Date: 12/18/2017

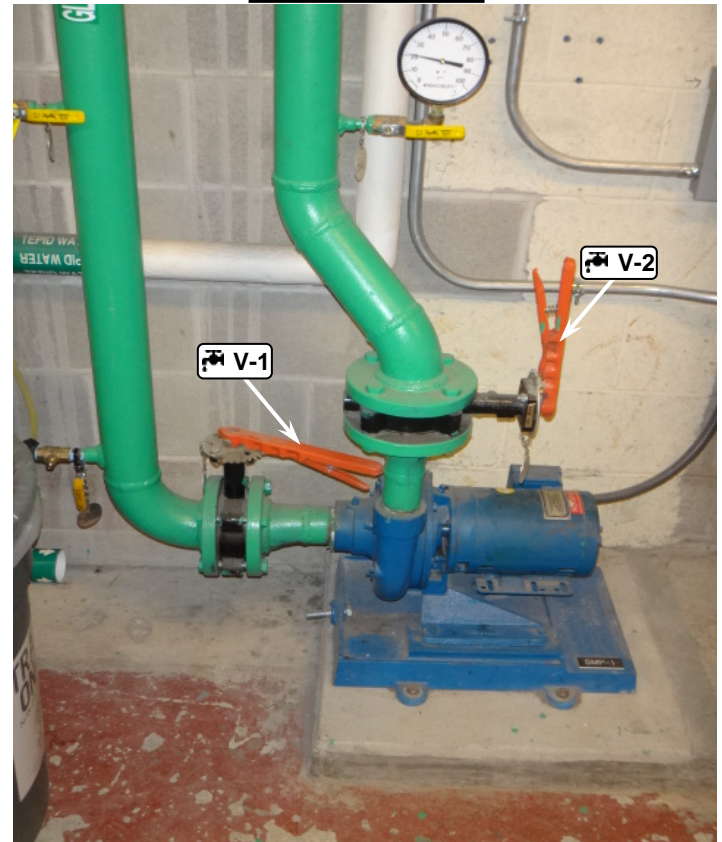
3  **Isolation Points to be Locked and Tagged**

Safety Is Your Responsibility!


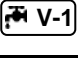
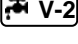
West Side View



West Side View



ALWAYS PERFORM A MACHINE STOP BEFORE LOCKING OUT DISCONNECTS

ID	Source	Device	Location	Method	Check
 E-1	Electrical 240V	Padlock	Isolation point on South side of unit.	Move electrical disconnect to off. Lock out.	Verify machine is deenergized.
 V-1	Glycol Suction - 25 PSI	Padlock	Isolation point on North side of unit.	Turn valve to closed position. Lock out.	Visually verify zero pressure status.
 V-2	Glycol Discharge - 25 PSI	Padlock	Isolation point located above unit.	Turn valve to closed position. Lock out.	Visually verify zero pressure status.



OPENING A GUARD DOES NOT CONSTITUTE A LOCKOUT
 ALWAYS VERIFY DE-ENERGIZATION OF EXPOSED ELECTRICAL PARTS AND RESIDUAL CAPACITANCE

Any machine modifications must be shown in procedure.
 Contact EHS to update procedure: 603-646-1762

